

A REVIEW ON RECENT TRENDS IN DEEP LEARNING METHODS FOR MEDICAL IMAGE ANALYSIS

¹Srinivasarao Gajula, ²V. Rajesh

ABSTRACT--In this paper we are discussing about deep learning for medical image classification and analysis. First, we will discuss the importance of the deep learning and then the basic steps involved in deep learning. To evaluate tumours manually a very difficult task. Now a day's in many applications medical image processing plays an important role. A significant increase was observed in medical cases associated with a brain tumour. MRI and CT images are mostly used to detect tumours and to examine abnormalities in terms of shape, size and location of the tumour. There are different techniques implemented for brain tumour diagnosis. Recent study focuses on 3D-based Convolution neural network (CNN), SVM and Multi-class Support vector machines (MCSVM), ANN (Artificial Neural Networks), for Deeper Segmentation.

Keywords--MRI image, CT image, Convolution neural network (CNN), SVM and Multi-class Support vector machines (MCSVM), ANN (Artificial Neural Networks), Deep learning techniques, Stationary Wavelet Transform (SWT), GCNN (Growing Convolution Neural Network).

I. INTRODUCTION

Now a days in many applications we are using MRI and CT images to analysis, diagnosis the diseases, features extraction. To analyse this, we are using image segmentation and classification to determine the tumour and to find the desises.in case of segmentation process we are mainly using segment the region of interest (ROI) and to divide them into classes. MRI and CT images are also used to find the abnormal growth of cells in brain tumours and these are categorised in to primary and metastatic tumours. Here we are discussing about different techniques for classification and segment of brain tumours of MR images. Here we are discussing different deep learning techniques and algorithms to analysis and classify the MR images. Brain tumours are mainly occurring due to uncontrolled multiplication of cells. These tumours will cause abnormal neurosystems. Now a days the most attacking brain tumour is glioma.to treat glioma we have different techniques like, radiotherapy, chemotherapy [1]. By using computerised diagnosis, we will get information about tumour location and shape, type etc. At the beginning stage it is important to diagnosis to give better treatment. In case of MR images, we are using radio frequency to generate tissues of human beings [2,3].

II. MAGNETIC RESONANCE IMAGING (MRI)

¹ Research Scholar, Departments of ECE, Koneru Lakshmaiah Educational Foundation, Guntur, India. gsrinivasarao443@gmail.com

² Professor, Departments of ECE, Koneru Lakshmaiah Educational Foundation, Guntur, India. rajesh4444@kluniversity.in

It is one of the most important scan to observe the detailed information in the brain and other body parts. Fig.1 [4] and Fig.2 [5] shows different existences of MRI brain images. MRI image is more effective than CT image because its high contrast and low radiation features [6] .

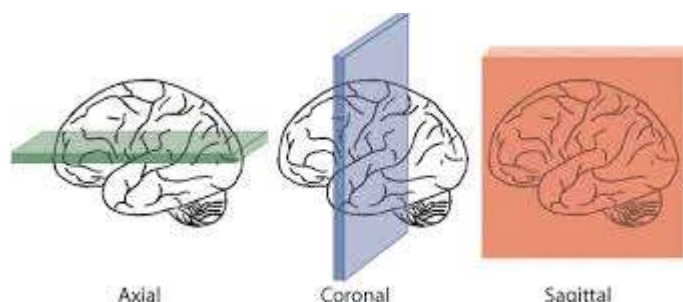


Figure 1: (a) Axial plane, (b) Coronal plane and (c) Sagittal plane of the brain image

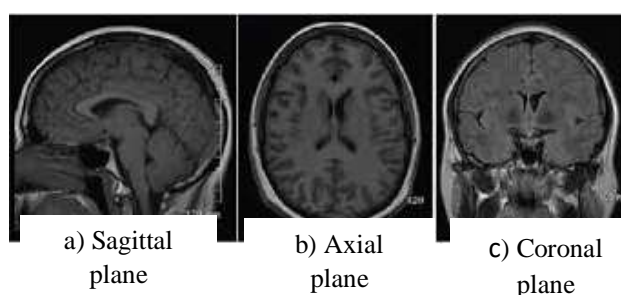


Figure 2: (a) Sagittal plane, (b) Axial plane and (c) Coronal plane of the brain observed by MRI

III. OVERVIEW OF DEEP LEARNING METHODS

MRI scan can also be used to determine different kinds of diseases related to brain such as Dementias [7], Parkinson's disorder [8], Alzheimer's disease [4], and many more. In Brain tumours diagnosis we are mainly consists of three tasks those are tumour detection, tumour segmentation, tumour classification. To perform these three methods, we are using traditional machine learning algorithms and deep learning. In modern computing we are using machine learning in the field of medical imaging. To perform registration and skull stripping [9], image reconstruction [10-12], and denoising algorithms [13,14], we are using advanced algorithms to simplify and enhance the brain information.

To improve accuracy in CNN for segmentation of brain tumour, [15] proposed hybrid technique combination of SWT, GCNN. By using SWT we will get better results in feature extraction when compared with Fourier transform. Random Forest Classifier is used for segmentation, to train the model they used GCNN. This hybrid method improves 2% in SSN and PSNR when compared with conventional CNN.

From MRI images the brain abnormalities can be detected by using supervised method [16] this can be performed by three steps. Those are first one is to develop a model; second one is division of MRI images and last one is classification. For classification of normal and abnormal MRI images automated deep transfer learning method is proposed [17]. In this they have used Harvard Medical School MR dataset. A novel method [18] adaptive fuzzy K-mean clustering proposed for segmentation of MR images. To obtain of multi scale features they proposed

segmentation technique multi-modality aggregation network [19]. Hybrid technique SVM and fuzzy C-mean proposed for MRI brain tumour segmentation [20]. Using CNN a method proposed for segmentation, In this method 3x3 kernels used for architecture [21] of CNN model. In [22] author proposed two steps to diagnosis the tumour. Tsallis entropy is used for pre-processing and for segmentation they used water shed algorithm.

The author in [23] to section the tumour from MR images, proposed Cuckoo Search Algorithm. Tumour classification and segmentation is performed by support vector machine (SVM) [24]. In this method adaptive thresholding is used for segmentation and features are extracted by using FFT. By using this method, we will get approximately 99% accuracy. Another method [25] is Support Vector Machine (SVM) for classification and Berkeley wavelet transform (BWT) for feature extraction used for automated segmentation of MR Images. For brain tumour classification the authors in [26] proposed FCM clustering and multimodal PSO.

IV. PERFORMANCE MEASURES

To estimate performance of classification or segmentation methods researchers used different quality metrics to validate their results. Such as Peak Signal to Noise Ratio (PSNR), Mean Square Error (MSE), Confusion matrix, Dice Similarity Coefficient (DSC) or Dice-overlap- index (DOI), Jaccard Index (Tanimoto Co-efficient), Accuracy metric, Sensitivity, Specificity, Recall and Precision. To provide required information we are using confusion matrix.

CS = Correct Separation of Tumour

WS = Wrong Separation of Tumour Tissue

WC = Wrong in Classification

CP = Correct Estimation

Accuracy can be measured as

$$Accuracy = \frac{CP + CS}{CS + WS + CP + WC}$$

Specificity can be measured as

$$Specificity = \frac{CP}{CP + WS}$$

Sensitivity can be measured as

$$Sensitivity = \frac{CS}{CS + WC}$$

Precision can be measured as

$$Precision = \frac{CS}{CS + WS}$$

Mean Square Error can be measured as

$$MSE = \frac{1}{m \times n} \sum_{i=1}^m \sum_{j=1}^n [x(i, j) - y(i, j)]^2$$

Peak Signal to Noise Ratio can be measured as

$$PSNR(dB) = 10 * \log_{10} \left[\frac{(255)^2}{MSE} \right]$$

The below figure shows different types of segmentation methods that we are using in deep learning.

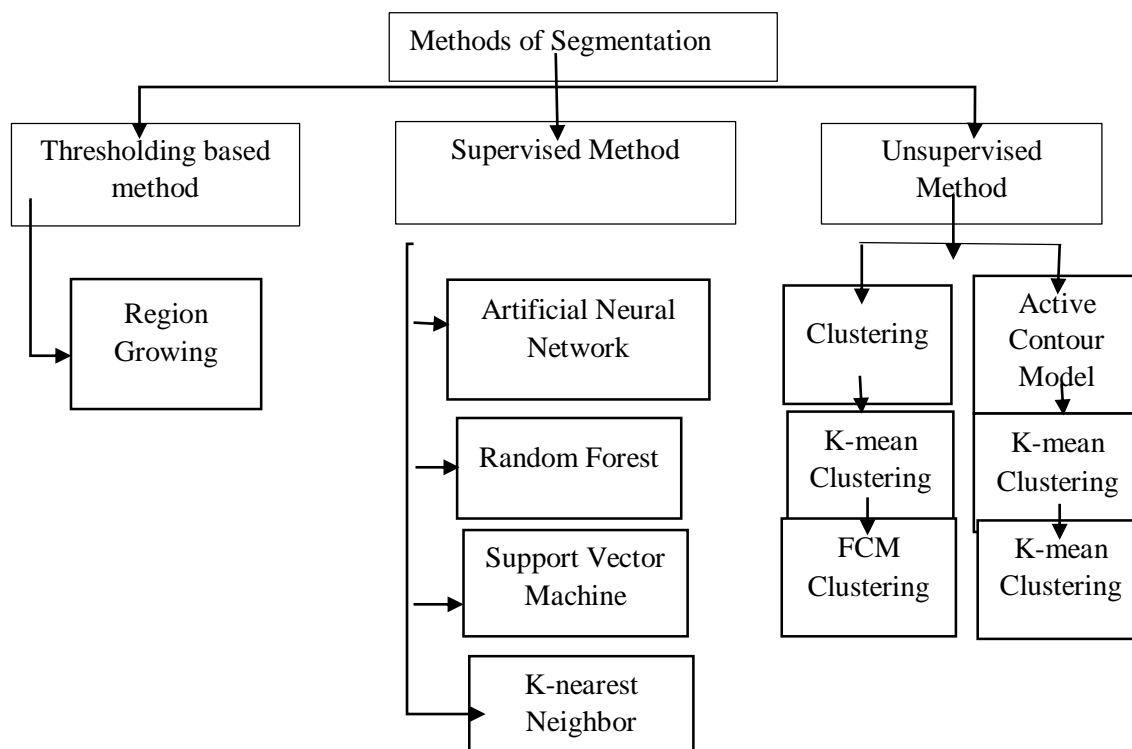


Figure 3: different methods in segmentation

The below figure shows different types of classification methods that we are using in deep learning

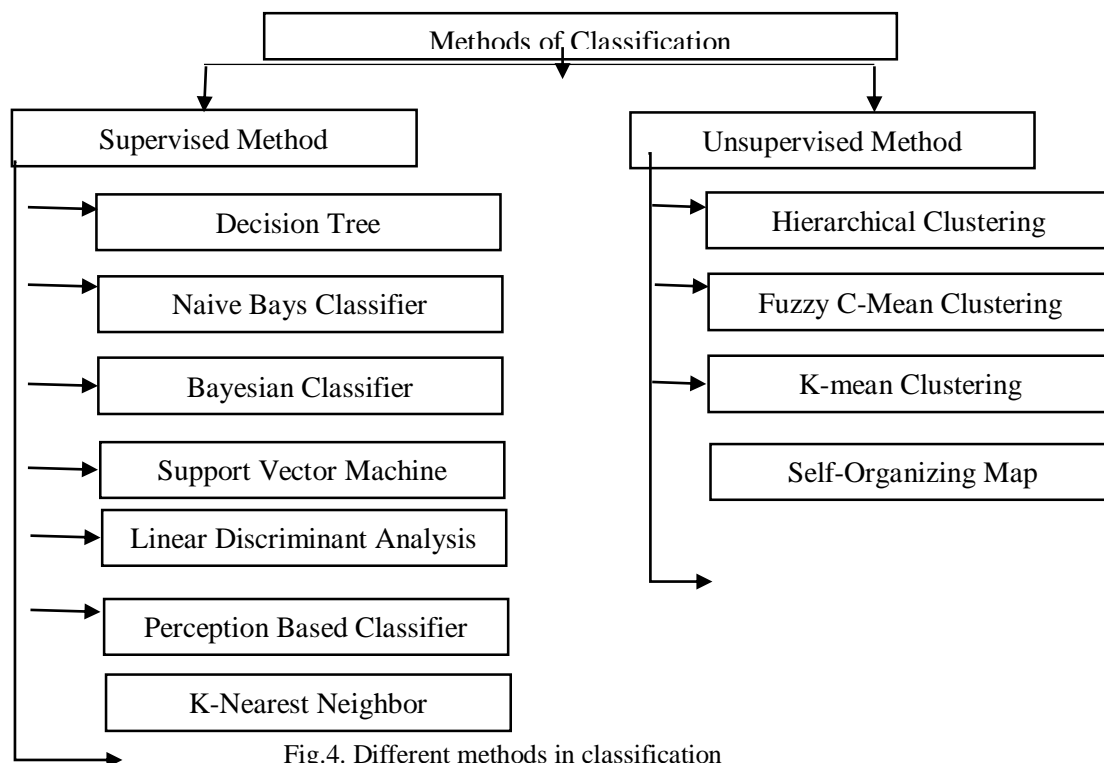


Fig.4. Different methods in classification

Figure 4: different method in classification

V. CONCLUSION

In this paper we have discussed about different classification and segmentation techniques of MR images. These techniques provide better accuracy, less noise. There are several methods implemented to perform image segmentation and classification. In these methods they have used different deep learning techniques and new algorithms, which will give better response. Some of these will give better accuracy and some with maximum dice score. For tumour classification we are also using some traditional machine learning techniques which will give better results. To find tumours we are using some standard datasets like keras etc.

REFERENCES

1. El-Dahshan ESA, Mohsen HM, Revett K, Salem A-BM. Computer-aided diagnosis of human brain tumor through MRI: a survey and a new algorithm. *Expert Syst. Appl.* 2014;41(11):5526–45. <https://doi.org/10.1016/j.eswa.2014.01.021>.
2. Jayadevappa D, Kumar SS, Murty DS. Medical image segmentation algorithms using deformable models: a review. *IETE Tech. Rev.* 2011;28(3):248–55. <https://doi.org/10.4103/0256-4602.81244>.
3. Yazdani S, Yusof R, Karimian A, Pashna M, Hematian A. Image segmentation methods and applications in MRI brain images. *IETE Tech. Rev.* 2015;32(6):413–27. <https://doi.org/10.1080/02564602.2015.1027307>.
4. Acharya, U. Rajendra, Steven Lawrence Fernandes, Joel En WeiKoh, Edward J. Ciaccio, Mohd Kamil Mohd Fabell, U. John Tanik, V. Rajinikanth, and Chai Hong Yeong. Automated Detection of Alzheimer's Disease Using Brain MRI Images—A Study with Various Feature Extraction Techniques. *Journal of Medical Systems* 43 (9), (2019), 302.
5. S. Clare, 1997, *Functional MRI: Methods and Applications*, Ph.D. Thesis, University of Nottingham, Nottingham, United Kingdom.
6. Amin J, Sharif M, Yasmin M, Fernandes SL. A distinctive approach in brain tumor detection and classification using MRI. *Pattern Recognition Letters.* (2017) pp. 1-10.
7. Marie Bruun, Juha Koikkalainen, Hanneke F.M. Rhodius-Meester, Marta Baroni, Le Gjerum, Mark van Gils, Hilka Soininen, Anne M. Remes, Päivi Hartikainen, Gunhild Waldemar, Patrizia Mecocci, Frederik Barkhof, Yolande Pijnenburg, Wiesje M. van der Flier, Steen G. Hasselbalch, Jyrki Lötjönen, Kristian S. Frederiksen, Detecting frontotemporal dementia syndromes using MRI biomarkers, *NeuroImage: Clinical*, Volume 22, (2019), pp. 101711.
8. Nicola Amoroso, Marianna La Rocca, Alfonso Monaco, Roberto Bellotti, Sabina Tangaro, Complex networks reveal early MRI markers of Parkinson's disease, *Medical Image Analysis*, Volume 48, (2018), pp. 12-24.
9. Xing XX, Zhou YL, Adelstein JS, Zuo X-N. PDE-based spatial smoothing: a practical demonstration of impacts on MRI brain extraction, tissue segmentation and registration. *Magn. Reson. Imaging* 2011;29(5):731–8. <https://doi.org/10.1016/j.mri.2011.02.007>.
10. Huang J, Chen C, Axel L. Fast multi-contrast MRI reconstruction. *Magn. Reson. Imaging* 2014;32(10):1344–52. <https://doi.org/10.1016/j.mri.2014.08.025>.

11. Qu X, Guo D, Ning B, Hou Y, Lin Y, Cai S. Undersampled MRI reconstruction with patch-based directional wavelets. *Magn. Reson. Imaging* 2012;30(7):964–77. <https://doi.org/10.1016/j.mri.2012.02.019>.
12. Kayvanrad MH, McLeod AJ, Baxter JS, McKenzie CA, Peters TM. Stationary wavelet transform for under-sampled MRI reconstruction. *Magn. Reson. Imaging* 2014;32(10):1353–64. <https://doi.org/10.1016/j.mri.2014.08.004>.
13. Yuan J, Wang J. Compressive sensing based on L1 and Hessian regularizations for MRI denoising. *Magn. Reson. Imaging* 2018;51:79–86. <https://doi.org/10.1016/j.mri.2018.04.015>.
14. Hu J, Zhou J, Wu X. Non-local MRI denoising using random sampling. *Magn. Reson. Imaging* 2016;34(7):990–9. <https://doi.org/10.1016/j.mri.2016.04.008>.
15. Mamta Mittal, Lalit Mohan Goyal, Sumit Kaur, Iqbaldeep Kaur, Amit Verma, D. Jude Hemanth, Deep learning based enhanced tumor segmentation approach for MR brain images, *Applied Soft Computing*, 78, (2019), pp. 346-354.
16. S. T. Kebir and S. Mekaoui, An Efficient Methodology of Brain Abnormalities Detection using CNN Deep Learning Network, *International Conference on Applied Smart Systems (ICASS)*, Medea, Algeria, (2018), pp. 1-5.
17. Muhammed Talo, Ulas Baran Baloglu, Özal Yıldırım, U Rajendra Acharya, Application of deep transfer learning for automated brain abnormality classification using MR images, *Cognitive Systems Research*, 54, (2019), pp. 176-188.
18. S. N. Sulaiman, N. A. Non, I. S. Isa and N. Hamzah, Segmentation of brain MRI image based on clustering algorithm, *IEEE Symposium on Industrial Electronics & Applications (ISIEA)*, Kota Kinabalu, (2014), pp. 60-65.
19. Jingcong Li, Zhu Liang Yu, Zhenghui Gu, Hui Liu, Yuanqing Li, MMAN: Multi-modality aggregation network for brain segmentation from MR images, *Neurocomputing*, 358, (2019), pp. 10-19.
20. Parveen and A. Singh, Detection of brain tumor in MRI images, using combination of fuzzy c-means and SVM, *International Conference on Signal Processing and Integrated Networks (SPIN)*, (2015), pp. 98-102.
21. Thaha, M. Mohammed, Kumar, K. Pradeep Mohan, Murugan, B. S., Dhanasekeran, S., Vijayakarthick, P., Selvi, A. Senthil, Brain Tumor Segmentation Using Convolutional Neural Networks in MRI Images, *Journal of Medical Systems*, 43 (9), (2019), pp. 294.
22. R. A. Rajam, R. Reshmi, A. Suresh, A. Suresh and S. Sindhuja, Segmentation and Analysis of Brain Tumor using Meta-Heuristic Algorithm, *International Conference on Recent Trends in Electrical, Control and Communication (RTECC)*, Malaysia, Malaysia, (2018), pp. 256-260.
23. Rajinikanth V., Fernandes Steven Lawrence, Bhushan Bharath, Harisha and Sunder Nayak Ramesh, Segmentation and analysis of Brain Tumor using Tsallis Entropy and Regularized Level Set, *International Conference on Micro-Electronics, Electromagnetics and Telecommunications*, Springer Singapore, (2018), pp. 313-321.
24. Alfonse, Marco, and Abdel-Badeeh M. Salem, an automatic classification of brain tumors through MRI using support vector machine. *Egyptian Computer Science Journal* 40 (03), (2016).

25. Nilesh Bhaskarrao Bahadure, Arun Kumar Ray, and Har Pal Thethi, Image Analysis for MRI Based Brain Tumor Detection and Feature Extraction Using Biologically Inspired BWT and SVM, International Journal of Biomedical Imaging, (2017), pp. 1-12.
26. H. A. M. Ali, M. A. A. Ahmed and E. M. Hussein, MRI Brain Tumour Segmentation Based on Multimodal Clustering and Level-set Method, International Conference on Computer, Control, Electrical, and Electronics Engineering (ICCCEEE), Khartoum, (2018), pp. 1-5.
27. Krishnakumar, B., Kousalya, K., Gokul, S., Karthikeyan, R., & Kaviyarasu, D. (2020). Image caption generator using deep learning. International Journal of Advanced Science and Technology, 29(3 Special Issue), 975-980. Retrieved from www.scopus.com
28. Lakshmi Prasanna, K., & Ashwini, S. (2019). Automatic breast cancer detection and classification using deep learning techniques. Test Engineering and Management, 81(11-12), 5505-5510. Retrieved from www.scopus.com
29. Jeya, S., & Sankari, L. (2020). Pso based deep learning model for forecasting pm2.5. Test Engineering and Management, 83, 8926-8932. Retrieved from www.scopus.com
30. Gunavardhan, K., Prabhakar Reddy, I., & Sujatha, P. (2019). A convolution neural network (CNN) based deep learning neural network forecast model for wind energy prediction. International Journal of Advanced Science and Technology, 28(19), 141-150. Retrieved from www.scopus.com
31. Kiran Kumar, J. P., & Supriya, M. C. (2020). Towards real time logo detection and classification using deep learning. International Journal of Control and Automation, 13(2), 63-73. Retrieved from www.scopus.com