

# The Effectiveness of Manufacturing Device in Production Industries

<sup>1</sup>Iswandi Idris, <sup>2</sup>Phong Thanh Nguyen, <sup>3</sup>Miftachul Huda, <sup>4</sup>Satria Abadi, <sup>5</sup>Ruly Artha

**ABSTRACT**--*In current serious worldwide commercial center the entirety of the associations is particularly concentrating on improving their profitability in order to save and furthermore development the serious increase. Therefore, appraisal of efficiency in any organization is significant. This work makes a strength of investigating the effect of human, capital and staple contribution at the efficiency of a diesel power station. This investigation controlled inside the venture features the critical thought processes in varieties inside the productiveness of a Diesel plant. The exact strategy received close by side relapse strategies affirmed that standard Gadget proficiency nearby staple accessibility is that the rule component for the changes inside the yield acquired from the plant.*

**Keywords**-- *Device performance, diesel plant, productivity & empirical.*

## I. INTRODUCTION

The priority associated with productiveness is unfold across all agencies of people and permeates complete society. Worldwide situation for the productivity stems from the very fact that products produced with the aid of distinctive vicinity of the planet ought to be aggressive in phrases of exceptional, generation, services and charge of manufacturing. Higher productivity will reason better fund generation and creates more sales for the region. This may enhance provider first-class and can be a step closer to creating a mile's better standard of dwelling. As in line with the economists, it's an important element for the precise profits of the folk. Company on the alternative hand are of the opinion that it increases competition and as a way to beautify profitability therein scenario, corporations were given to convey down production prices drastically. Technical people in the enterprise hyperlink the occasion to meeting of cut-off dates, stepped forward best of synthetic products and in the end enhancing the fabric utilization and decreasing the charges.

To be had assets are optimized with the aid of analyzing the prominent assets to get better productivity. This is often performed thru diverse applicable development techniques used alongside creativity and in-depth studies and improvement. That is able to now not be possible without a proper control system. It involves whole management from top to backside along facet the employees running in the direction of reduction of producing, transportation and logistics charges via an amalgamation of all Stages of productivity cycle. All through this regard, common gadget performance being a sturdy tool plays an essential position. It facilitates to spot hidden additives of an inefficient utilization of efficient time and thereby exposing precise percent of effective time. The OEE values need to be tracked at ordinary durations to purpose tremendous upgrades in the production process. This is able to

---

<sup>1</sup>Industrial Engineering Politeknik LP3I Medan, [iswandi.idris@plm.ac.id](mailto:iswandi.idris@plm.ac.id).

<sup>2</sup>Department of Project Management, Ho Chi Minh City Open University, Vietnam, [phong.nt@ou.edu.vn](mailto:phong.nt@ou.edu.vn)

<sup>3</sup>Universiti Pendidikan Sultan Idris, Malaysia.

<sup>4</sup>STMIK Pringsewu, Lampung, Indonesia.

<sup>5</sup>Anay Publication. <http://www.anaypub.com>.

be a jump towards embracing global-magnificence lean production systems by way of all of the businesses of varying sizes.

A multi-unit business enterprise having its flora placed at extraordinary geographical area often observes differences in Plant productivities albeit companies has taken care to possess some widespread inner surroundings represented within the sort of paintings way of life, practices, traditions, sort of management and control expectancies. External surroundings have an effect on performance of the company. It is able to each help in improving the overall performance also as in reducing an equivalent. External surroundings act as a supra-system all through which an employer works as a system. Organization consequently, gets influence through interplay of various subsystem of outside surroundings. Outside environment is characterized via the social beliefs, price system, culture and subculture of society. The government. Guidelines and policies, the law, the labor regulation and tax shape from another size. The policy and political ideology followed by means of the government of the land, the economic policy, the supply of budget are the alternative components of the environment.

This paper reviews the paintings administered at some stage in a diesel electricity station. The impact of varied elements influencing the productiveness of outstanding assets in the plant have been studied and analyzed. The general equipment performance of assorted generators set up inside the plant are decided and effects are presented at some point of a graphical and tabular format.

## II. LITERATURE REVIEW

Efficiency of a business unit is measured in-phrases of a productiveness index. Destiny sustenance of productivity requires boom of a firm with assist from management structures in phrases of relevant production techniques. This can be finished via typical improvement in techniques employed by the control to deliver better overall productivity. Industry will vouch for better productivity, as they may be going to have large effect on usual productiveness of the financial system. Inside the aggressive surroundings, customer delight is that the utmost essential issue and enterprises try tough in minimizing manufacturing fees the use of green techniques. Normally within the industries, fee of manufacturing is saved low by extending the everyday time among failures of the device. This could additionally purpose decreasing the preservation fees.

The effectiveness of manufacturing device in production industries are often maximized the use of TPM technique primarily based on OEE. the unproductive time are often growing to become in to effective time thereby observing better savings and in addition contributing definitely to profit via increasing even one percentage in OEE score. Evaluation of diverse web sites all through a massive organization are often administered the usage of OEE rating. It's going to additionally play a crucial role choose on strategic funding and associated management choices. It's located that attitude of carrier industries. In phrases of productivity have to be from each organization and patron angle. This has many introduced blessings like reconciliation of conflicts, better leverage thereby enhancing fine of carrier and enhancing service productiveness. A conceptual body work incorporating the previously referred to eventualities and its implications have additionally been said. Shaw emphasizes the great-productivity connection and lay stress that a success business enterprise functions a triumphing Mixture of the both. Shaw also distinct the standard characteristics that accommodates of customer perception, product reliability, fee and warranty. Shaw has expressed the relationship in equation 1 as

$$QUP \sim P1$$

(1) Where, Q = Quality as perceived by customer

P = Productivity as reflected in employee output

P<sub>1</sub> = Profitability

In a simple expression, quality has also been referred to as 'fitness for use'. Quality encompasses requirement of product durability, usability, maintainability, reliability in a given frame work of costs and specified attributes. In totality of performance objectives, it should satisfy market needs, provide safety to personnel, satisfy design, specifications, permit expectation of longer life of the product etc. A higher output per unit of input or reduced input cost per unit of output should not be deemed as higher productivity if the same has been accomplished at the cost of quality.

### III. METHODOLOGY

A descriptive kind manufacturing version is employed for the size of productiveness. The enter measurements for the model are guy time, system time and equivalent of guy strength. Company's output are frequently expressed in terms of manufacturing gadgets, its fee also as corrected charge in fashionable hours. The output and enter of a firm is commonplace unit of measurement. The equations 2 to 6 are used for calculating productivity and its index

$$\text{Human factor} = \frac{\text{Overall output}}{\text{Human input}} \quad (2)$$

$$\text{Material factor} = \frac{\text{Overall output}}{\text{Raw material input}} \quad (3)$$

$$\text{Capital factor} = \frac{\text{Overall output}}{\text{Capital input}} \quad (4)$$

$$\text{Miscellaneous factor} = \frac{\text{Overall output}}{\text{Capital input}} \quad (5)$$

$$\text{Total productive factor} = \frac{\text{Overall output}}{(\text{Human} + \text{Capital} + \text{Material} + \text{Miscellaneous}) \text{ input}} \quad (6)$$

The existing examine is meant to evaluate the productiveness at agency stage. Correlation evaluation, regression Analysis and forecasting fashions are going to be applied within the analysis of the data. OEE has been computed from 8 mills information amassed for a length of 3-years.

Multiple correlation analysis is employed to estimate the worth of variable Y. Equation 7 is hired to calculate price of P at ith factor.

$$P_i = x + y' \cdot A_i + y'' \cdot A_i^* + y^+ \cdot A_i^+ \quad (7)$$

Where, A<sub>2i</sub> and A<sub>3i</sub> are the values of first, second and third independent variable respectively at ith point. Similarly, y', y\* and y+ are the slope associated with X<sub>11</sub>, X<sub>12</sub> and X<sub>13</sub> respectively. Error is denoted by letter e<sub>i</sub>.

$$e_i = (P_i - \bar{P}_i) \quad (8)$$

$$\text{Also, } y = \sum_{i=1}^N e_i^2 = \sum_{i=1}^N (P_i - \bar{P}_i)^2 \quad (9)$$

On substituting equation 8 in equation 9, equation 10 is obtained

$$= \sum_{i=1}^N (P_i - x - y_1 * A_{1i} - y_2 * A_{2i} - y_3 * A_{3i})^2 \tag{10}$$

Partial differentiation of y with x, b<sub>1</sub>, b<sub>2</sub> and b<sub>3</sub> and equating it to zero will give minimum value of y. The resulting normal equations are numbered as 11.

$$\begin{aligned} \sum_{i=1}^N P_i &= N * x + y_1 * \sum_{i=1}^N A_{1i} + b_2 * \sum_{i=1}^N A_{2i} + y_3 * \sum_{i=1}^N A_{3i} \\ \sum_{i=1}^N P_i * A_{1i} &= x * \sum_{i=1}^N A_{1i} + y_1 * \sum_{i=1}^N (A_{1i})^2 + y_2 * \sum_{i=1}^N (A_{2i} * A_{3i}) + y_3 * \sum_{i=1}^N (A_{3i} * A_{2i}) \\ \sum_{i=1}^N P_i * A_{2i} &= x * \sum_{i=1}^N A_{2i} + y_1 * \sum_{i=1}^N (A_{1i} * A_{2i}) + y_2 * \sum_{i=1}^N (A_{2i})^2 + y_3 * \sum_{i=1}^N (A_{3i} * A_{2i}) \\ \sum_{i=1}^N P_i * A_{3i} &= x * \sum_{i=1}^N A_{3i} + y_1 * \sum_{i=1}^N (A_{1i} * A_{3i}) + y_2 * \sum_{i=1}^N (A_{2i} * A_{3i}) + y_3 * \sum_{i=1}^N (A_{3i})^2 \end{aligned} \tag{11}$$

Equation 11 is used to obtain the values of x, b<sub>1</sub>, b<sub>2</sub> and b<sub>3</sub>. These values are used to formulate linear equation 12.

$$P_i = x + y_1 * A_{1i} + y_2 * A_{2i} + y_3 * A_{3i} \tag{12}$$

Further, correlation analysis is conducted for determining the coefficients of determination and correlation. Both equations 13 and 14 are used to compute r<sup>2</sup> as shown in equation 15. Because one minus ratio between two variations obtained from equations 13 and 14 is the coefficient of determination.

$$\sum(Y - \hat{Y})^2 \tag{13}$$

$$\sum(Y - \bar{y})^2 \tag{14}$$

$$r^2 = 1 - [\sum(Y - \hat{Y})^2 / \sum(Y - \bar{y})^2] \tag{15}$$

Forecast is expressed mathematically in equation 16.

$$F(t+1) = \alpha Y_t + (1 - \alpha) F_t \tag{16}$$

The computation of OEE is composed of availability, performance and quality rate as shown in equation 17. The computation of availability, performance and quality rate is carried out using equations 18 to 23.

$$\text{Overall Equipment Efficiency (OEE)} = \text{Availability(A)} \times \text{Performance(P)} \times \text{Quality rate (Q)} \tag{17}$$

$$\text{Availability (A)} = \frac{\text{Time available for production} - \text{Down Time}}{\text{Time available for production}} \tag{18}$$

$$\text{Performance Efficiency (PE)} = \text{Rate Efficiency (RE)} \times \text{Speed Efficiency (SE)} \tag{19}$$

$$\text{Rate Efficiency (RE)} = \text{Actual cycle time} / \text{Design cycle time} \tag{20}$$

$$\text{Design cycle time} = (\text{Generator running time per year}) + (\text{No of times generator was run} \times \text{Activation time of generator (Secs)} \times 1/3600) \tag{21}$$

$$\text{Speed Efficiency (SE)} = \text{Max output produced} / \text{Max design output} \tag{22}$$

$$\text{Quality rate (Q)} = \text{No. of good items} / \text{Total No. of items} \tag{23}$$

#### IV. RESULT AND DISCUSSIONS

The results of the total productive index computation are given in the table 1.

**Table 1:** Total Productive Index Computation

	Details	First year Rs (in Lakhs)	Second year Rs (in Lakhs)	Third year Rs (in Lakhs)
A	Overall output	18634	22681(lakhs)	48037
B	Human Input	267	416	472
C	Capital Input	373	793	882
D	Material Input	17498	23597	45071
E	Miscellaneous Input	15	19	26

F	Total Input	18153	24825	46450
	Human factor (A/B)	69.79	54.52	101.77
	Capital factor (A/C)	49.96	28.6	54.46
	Material factor (A/D)	1.06	0.96	1.07
	Miscellaneous factor (A/E)	1242.27	1193.74	1847.58
	Total Productive factor (A/F)	1.03	0.91	1.03
	Human Index (HI)	1	0.78	1.46
	Capital Index (CI)	1	0.57	1.09
	Material Index (MI)	1	0.91	1.01
	Miscellaneous Index (MSI)	1	0.96	1.49
	Total Productive Index (TPI)	1	0.88	1
	% change in total productivity		11.7	13.19

Total productivity decreased by 11.7% during the second year when compared with first year. Total productivity increased by 13.19% during the third year when compared with second year.

**Table 2:** Computation of Various Indices

Period	TPI(P)	HI(A <sub>1</sub> )	CI(A <sub>2</sub> )	MI(A <sub>3</sub> )	MSI(A <sub>4</sub> )	A <sub>12</sub>	A <sub>22</sub>	A <sub>32</sub>	A <sub>42</sub>
First year	1	1	1	1	1	1	1	1	1
Second year	0.88	0.78	0.57	0.91	0.96	0.61	0.32	0.83	0.92
Third year	1	1.46	1.09	1.01	1.49	2.13	1.19	1.02	2.22
∑ Sum	2.88	3.24	2.66	2.92	3.45	3.74	2.51	2.85	4.14

**Table 3 :** Multiple Régression Calculassions Continuation

Term	A1A2	A2A3	A3A4	A4A2	A1A3	A1A4	PA <sub>1</sub>	PA <sub>2</sub>	PA <sub>3</sub>	PA <sub>4</sub>
First year	1	1	1	1	1	1	1	1	1	1
Second year	0.44	51.87	0.87	0.55	0.71	0.75	0.69	0.5	0.8	0.84
Third year	1.46	1.1	1.5	1.62	1.47	2.18	1.46	1.09	1.01	1.49
∑ Summation	2.9	3.97	3.37	3.17	3.18	3.93	3.15	2.59	2.81	3.33

Table 2 and 3 shows the calculation multiple regression analysis. The constants x, y<sub>1</sub>, y<sub>2</sub>, y<sub>3</sub> and y<sub>4</sub> are obtained from equation 11 and the values are used formulate equation number 24.

$$P_i = - 0.001 - 0.079 (HI) - 0.070 (CI) + 0.943 (MI) + 0.166 (MSI) \quad (24)$$

the standard deviation values obtained from the equation 24 are shown in table 4.

**Table 4:** Standard Deviation of Productivity Indices

Type	Standard Deviation.
TPI	0.9154
HI	0.4244
CI	0.2641
MPI	0.2924
MSI	0.4062

**Table 5:** Correlation Analysis Table

Factor	TPI
TPI	1.0000
HI	0.1237
CI	0.0900
MPI	0.2038
MSI	0.1073

Table 4 shows that cloth and human inputs have higher correlation with overall productivity. Emphasis of the management need to get on the above elements to beautify total productiveness and table 5 shows that the elements which have higher correlation must be monitored closely through giving more attention. extended motivation, higher training, imparting activity enrichment, improved fine circle, higher financial incentives and exact promotion policy will purpose progressed human enter. In addition, development in cloth input are regularly obtained through wastage reduction, better manage of stock and nice. Stepped forward gadget protection, reduced variety of idling machines and infrastructure are motives for improving capital productivity. Discount in overheads, losses, wastages complemented with the aid of better advertising practices and remarkable welfare facilities will produce to higher miscellaneous productivity. Forecasting of general productiveness for every year is obtained by using the usage of equation 16. The really worth of  $\alpha$  is selected as 0.2. The values computed are given in table 6.

Forecasting of total productivity for each year is obtained by using equation 16. The value of  $\alpha$  is chosen as 0.2.

The values computed are given in Table 6.

**Table 6:** Forecasting Table

Period	TP (P)	Forecast F	Error	Absolute Error	Squared Error
First Year	1.03	-	-	-	-
Second Year	0.91	1.03	-0.12	0.12	0.014
Third year	1.03	1.01	0.02	0.02	0.0004
Current year	-	1.014	-	-	-

Table 6 shows that forecasted total productivity value for the current year is 1.014. The overall efficiency of generators has been computed from the data collected from organization regarding the performance of the eight generators installed in the plant.

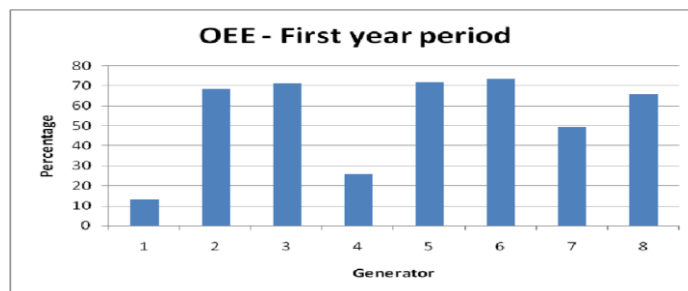
**Table 7: OEE of Eight Generators during First Year Period**

Variables / Production Parameters	Diesel Generators								
	Eq No.	1	2	3	4	5	6	7	8
<b>Availability</b>									
Total Running Time (hrs.) (TRT)		7468	3337	3241	5301	3912	3445	3818	3902
Down time (hrs.)		6327	758	622	3741	723	586	1692	993
Available in hrs. A	2	1096	2579	2619	1560	3189	2859	2126	2909
Available in % Availability	A/TRT	15	77	81	29	82	83	56	75
<b>Performance Efficiency</b>									
Actual Cycle Time (hrs.)		7468	3337	3241	5301	3912	3445	3818	3902
Design cycle Time (hrs.)	5	7486	3355	3259	5319	3940	3463	3836	3920
Rate efficiency (RE)	4	1	1	0.99	1	0.99	1	1	1

**Investigating the Effect of Overall Equipment Efficiency on the Productivity of a Diesel Power Plant using an Empirical Approach**

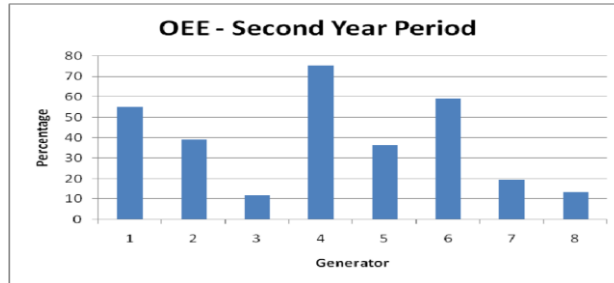
Table 7: Contd.,									
Max. Output Produced (MW)		16	16	16	16	16	16	16	16
Max. Design Output (MW)		18	18	18	18	18	18	18	18
Speed Efficiency (SE)	6	0.89	0.89	0.89	0.89	0.89	0.89	0.89	0.89
Performance efficiency (PE)	3	0.89	0.89	0.88	0.89	0.88	0.89	0.89	0.89
<b>Quality Rate(Q)</b>									
Q	7	100%	100%	100%	100%	100%	100%	100%	100%
OEE	1	13	68.4	71.4	26.1	72	73.5	49.3	66

Analysis of the OEE values of the eight generators are given in Table 7 and the results are shown as follows:



**Figure 1: Percentage Distributions of OEE Values for First Year Period.**

Figure 1 shows the percentage distributions of OEE values for first year period. It is inferred from figure 1 that the generator for number 6 exhibits highest OEE (73.5%) followed by generator number 5 with 72% efficiency. The other generators showed no: 3 (71.4%), no: 2 (68%) OEE values respectively. This problem identified was to focus on the availability of generators 1 and 4 by incorporating appropriate maintenance methods to improve the OEE of generators.

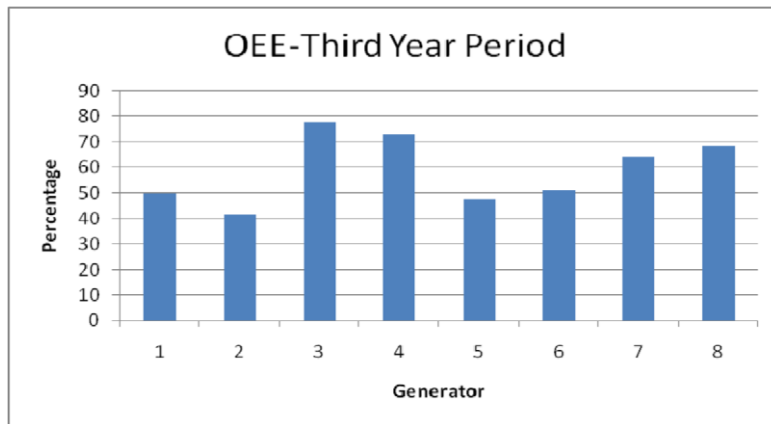


**Figure 2:** Percentage Distributions of OEE Values for Second Year Period

Figure 2 shows the percentage distributions of OEE values for second year period. In the second year, generator No: 1 was not available continuously for production due to breakdown.

After comparing the OEE values for the years for the three-year period, it is found that all generators are not showing consistent performance due to no availability of machines on account of breakdown maintenance.

Figure 3 shows the percentage distributions of OEE values for third year period. Less spacing of installed generators (approximately 3m), generators get overheated and it leads to scheduled maintenance work mandatory for equipment.



**Figure 3:** Percentage Distributions of OEE Values for Third Year Period.

In this case, a vapor absorption air condition system has to be installed with at least 10 m spacing and system can make use exhaust gas of the generator. This facilitates a better OEE.

## V. CONCLUSION

Crucial conclusions drawn after undertaking an in depth have a look at in diesel strength station are given underneath. Total productiveness has seen a variation inside the 3-yr duration, there can be a lower of overall productiveness by eleven.7% throughout the first 12 months as compared to 2d yr and overall productiveness extended by 13.19% throughout the 1/3 12 months in comparison to 2nd year. There may be a maximum correlation between material enter and total productiveness. General productivity for contemporary yr has been decided using



forecasting model as 1.014. Incorrect preservation has led to eight generators not showing constant performance in the course of the three -year duration.

## REFERENCES

1. Ahuja, I. P. S., and J. S. Khamba. 2006. "Strategies and Success Factors for Overcoming Challenges in TPM Implementation in Indian Manufacturing Industry." *Journal of Quality in Maintenance Engineering* 14 (2): 123–147.
2. Brah, S. A., and W. K. Chong. 2005. "Relationship between Total Productive Maintenance and Performance." *International Journal of Production Research* 42 (12): 2383–2401.
3. R. Greatbanks. 2000. "Overall Equipment Effectiveness as a Measure of Operational Improvements-a Practical Analysis." *International Journal of Operations Management* 20: 1488–1502.
4. Campbell, J. D., and R. P. James. 2006. *Strategies for Excellence in Maintenance Management*. 2nd ed. Portland, OR: Productivity press.
5. J. E. Rooda. 2006. "OEE and Equipment Effectiveness: An Evaluation." *International Journal of Production Research* 44 (23): 4987–5003.
6. J. S. Dureja. 2010. "TPM- a Key Strategy for Productivity Improvement in Process Industry." *Journal of Engineering Science and Technology* 6 (1): 1–16.
7. T. Griffin. 1997. "Maintenance: Modeling its Strategic Impact." *Journal of Managerial Issues* 9: 440–453.
8. R. Korukonda, I. Virtanen, and P. Yli-Olli. 1994. "Improving Productivity and Quality in Manufacturing Organizations." *International Journal of Production Economics* 36: 169–183.
9. S. Vardhan, and M. S. Al Haque. 2016. "Study of Success Factors of TPM Implementation in Indian Industry towards Operational Excellence: An Overview.
10. Cao, Y., Huang, L., Li, Y., Jermisittiparsert, K., Ahmadi-Nezamabad, H., & Nojavan, S. 2020. "Optimal Scheduling of Electric Vehicles Aggregator under Market Price Uncertainty Using Robust Optimization Technique." *International Journal of Electrical Power & Energy Systems* 117: 105628.
11. Yu, D., Wang, Y., Liu, H., Jermisittiparsert, K., & Razmjoooy, N. 2019. "System Identification of PEM Fuel Cells Using an Improved Elman Neural Network and a New Hybrid Optimization Algorithm." *Energy Reports* 5: 1365-1374.
12. Tian, M., Ebadi, A., Jermisittiparsert, K., Kadyrov, M., Ponomarev, A., Javanshir, N., & Nojavan, S. 2019. "Risk-Based Stochastic Scheduling of Energy Hub System in the Presence of Heating Network and Thermal Energy Management." *Applied Thermal Engineering* 159: 113825.
13. Yu, D., Wnag, J., Li, D., Jermisittiparsert, K., & Nojavan, S. 2019. "Risk-Averse Stochastic Operation of a Power System Integrated with Hydrogen Storage System and Wind Generation in the Presence of Demand Response Program." *International Journal of Hydrogen Energy* (In press), DOI: 10.1016/j.ijhydene.2019.09.222.
14. Jabarullah, N., Jermisittiparsert, K., Melnikov, P., Maseleno, A., Hosseinian, A., & Vessally, E. 2019. "Methods for the Direct Synthesis of Thioesters from Aldehydes: A Focus Review." *Journal of Sulfur Chemistry* (In press), DOI: 10.1080/17415993.2019.1658764.

15. Jiao, Y., Jernsittiparsert, K., Krasnopevtsev, A., Yousif, Q., & Salmani, M. 2019. "Interaction of Thermal Cycling and Electric Current on Reliability of Solder Joints in Different Solder Balls." *Materials Research Express* 6 (10): 106302.
16. Yu, D., Ebadi, A., Jernsittiparsert, K., Jabarullah, N., Vasiljeva, M., & Nojavan, S. 2019. "Risk-constrained Stochastic Optimization of a Concentrating Solar Power Plant." *IEEE Transactions on Sustainable Energy* (In press), DOI: 10.1109/TSTE.2019.2927735.
17. Jernsittiparsert, K., Sriyakul, T., Sutduean, J., & Singa, A. 2019. "Determinants of Supply Chain Employees Safety Behaviours." *Journal of Computational and Theoretical Nanoscience* 16 (7): 2959-2966.
18. Sriyakul, T., Singa, A., Sutduean, J., & Jernsittiparsert, K. 2019. "Effect of Cultural Traits, Leadership Styles and Commitment to Change on Supply Chain Operational Excellence." *Journal of Computational and Theoretical Nanoscience* 16 (7): 2967-2974.
19. Sutduean, J., Singa, A., Sriyakul, T., & Jernsittiparsert, K. 2019. "Supply Chain Integration, Enterprise Resource Planning, and Organizational Performance: The Enterprise Resource Planning Implementation Approach." *Journal of Computational and Theoretical Nanoscience* 16 (7): 2975-2981.
20. Singa, A., Sriyakul, T., Sutduean, J., & Jernsittiparsert, K. 2019. "Willingness of Supply Chain Employees to Support Disability Management at Workplace: A Case of Indonesian Supply Chain Companies." *Journal of Computational and Theoretical Nanoscience* 16 (7): 2982-2989.
21. Jernsittiparsert, K. & Chankoson, T. 2019. "Behavior of Tourism Industry under the Situation of Environmental Threats and Carbon Emission: Time Series Analysis from Thailand." *International Journal of Energy Economics and Policy* 9 (6): 366-372.
22. Romprasert, S. & Jernsittiparsert, K. 2019. "Energy Risk Management and Cost of Economic Production Biodiesel Project." *International Journal of Energy Economics and Policy* 9 (6): 349-357.
23. Kasayanond, A., Umam, R., & Jernsittiparsert, K. 2019. "Environmental Sustainability and its Growth in Malaysia by Elaborating the Green Economy and Environmental Efficiency." *International Journal of Energy Economics and Policy* 9 (5): 465-473.
24. Jernsittiparsert, K., Sriyakul, T., & Rodoonsong, S. 2013. "Power(lessness) of the State in the Globalization Era: Empirical Proposals on Determination of Domestic Paddy Price in Thailand." *Asian Social Science* 9 (17): 218-225.
25. Jernsittiparsert, K., Sriyakul, T., & Pamornmast, C. 2014. "Minimum Wage and Country's Economic Competitiveness: An Empirical Discourse Analysis." *The Social Sciences* 9 (4): 244-250.
26. Jernsittiparsert, K., Pamornmast, C., & Sriyakul, T. 2014. "An Empirical Discourse Analysis on Correlations between Exchange Rate and Industrial Product Export." *International Business Management* 8 (5): 295-300.
27. Jernsittiparsert, K., Sriyakul, T., Pamornmast, C., Rodboonsong, S., Boonprong, W., Sangperm, N., Pakvichai, V., Vipaporn, T., & Maneechote, K. 2016. "A Comparative Study of the Administration of Primary Education between the Provincial Administration Organisation and the Office of the Basic Education Commission in Thailand." *The Social Sciences* 11 (21): 5104-5110.
28. Jernsittiparsert, K., Trimek, J., & Vivatthanaporn, A. 2015. "Fear of Crime among People in Muang-Ake, Lak-Hok, Muang, Pathumthani." *The Social Sciences* 10 (1): 24-30.

29. Jermittiparsert, K. & Akahat, N. 2016. "Fear of Crime among Students of Kalasin Rajabhat University." *Research Journal of Applied Sciences* 11 (2): 54-61.
30. P. V. Ramaiah (2016). Application of Taguchi, Fuzzy-Grey Relational Analysis for Process Parameters Optimization of WEDM on Inconel-825. *Indian Journal of Science and Technology*, vol. 8, no. 35.
31. N and Dalgarnob. K. W. (2014). Effect of wire EDM cutting parameters for evaluating of Additive Manufacturing Hybrid Metal Material. *Proc. of 2<sup>nd</sup> International Materials, Industrial, and Manufacturing Engineering Conference*, 4-6, Indonesia, pp. 532 – 537.
32. Arunkumar. L, Raghunath. B. K. Electro Discharge Machining Characteristics of Mg/SiCPMetal matrix Composites by Powder Metallurgy Techniques. *International Journal of Engineering and Technology*.
33. Kanlayasiri. K, Boonmung. S (2006). Effects of wire - EDM machining variables on surface roughness of newly developed DC 53 die steel: Design of experiments and regression model. *Journal of Materials Processing Technology*, 192–193, pp. 459– 464.
34. B. Puri, B. Bhattacharyya (2004). An analysis and optimization of the geometrical inaccuracy due to wire lag phenomenon in WEDM," *International Journal of Machine Tools & Manufacture*, vol. 43, 2003, pp. 151–159.
35. Dr. G. Krishnaiah (2016). Optimization of process parameters using AHP and VIKOR when turning aisi 1040 steel with coated tools. *International Journal of Mechanical Engineering and Technology*, vol. 8, Iss. 1, pp. 241–248.
36. P. Shandilya, P. K. Jain, N. K. Jain (2011). Wire electric discharge of metal matrix composite. *Damm International scientific book*, pp. 383-400.
37. Saravanakumar, A., Santarao, K., & Nandini, G. Influence of alumina nano powder mixed dielectric fluid in electric spark machining of aisi d3 steel. *Carbon (c)*, 2, 2–3.
38. R. K. Bhuyan, and B. C. Routara (2016). Optimization the machining parameters by using VIKOR and Entropy Weight method during EDM process of Al–18%SiCp Metal matrix composite. *Decision Science Letters*, vol. 5, pp. 269–282.
39. Bhattacharyya, B. (2014). Analysis of traveling wire electrochemical discharge machining of Hylam based composites by Taguchi method. *International Journal of Research in Engineering & Technology*, 2(2), 223–236.
40. S. C. Raja, and G. Sundararaja. 2013. "Improving Productivity of Manufacturing Division using Lean Concepts and Development of Material Gravity Feeder-a Case Study." *International Journal of Lean Thinking* 3 (2): 117–134.
41. R. R. Bodhale, and D. E. Robinson. 2005. "Manufacturing Productivity Improvement using Effectiveness Metrics and Simulation Analysis." *International Journal of Production Research* 41 (3): 513–527.
42. Maggard, B. N., and D. Rhyne. 1993. "TPM- a Timely Integration of Production and Maintenance." *Production and Inventory Management* 33: 6–10.
43. Mcadam, R., and A. M. Duffner. 1997. "Implementation of Total Productive Maintenance in Support of an Established Total Quality Programme." *Total Quality Management* 7 (6): 613–630. Doi: 10.1080/09544129610522.
44. McKone, K. E., G. S. Roger, and O. C. Kristy. 1998. "Total Productive Maintenance: A Contextual View." *Journal of Operations Management* 17 (2): 123–144.